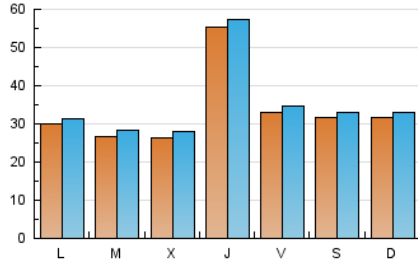


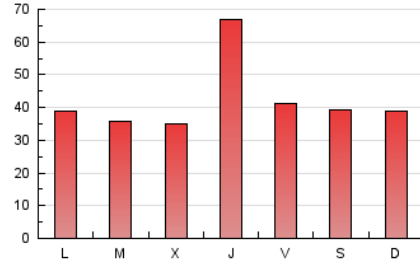
Mayo - 2022	98.421	107.503	129.623
	<b>3.307</b>	<b>3.468</b>	<b>4.181</b>
	3.363	3.535	4.296
	3.168	3.304	3.901
	1,21		
	0:00:37		
	0:03:00		

<b>1</b>	2.041	2.179	2.682	<b>11</b>	2.497	2.623	3.226	<b>21</b>	6.393	6.541	7.443
<b>2</b>	2.381	2.538	3.029	<b>12</b>	2.206	2.324	2.859	<b>22</b>	7.141	7.316	8.320
<b>3</b>	2.500	2.713	3.350	<b>13</b>	2.437	2.588	3.119	<b>23</b>	5.251	5.441	6.680
<b>4</b>	2.550	2.752	3.448	<b>14</b>	1.856	1.951	2.389	<b>24</b>	3.018	3.186	4.096
<b>5</b>	2.662	2.850	3.776	<b>15</b>	1.960	2.085	2.389	<b>25</b>	2.702	2.877	3.630
<b>6</b>	2.390	2.570	3.113	<b>16</b>	2.256	2.364	2.876	<b>26</b>	2.602	2.805	3.645
<b>7</b>	2.097	2.232	2.688	<b>17</b>	2.726	2.858	3.472	<b>27</b>	2.506	2.694	3.368
<b>8</b>	2.242	2.343	2.799	<b>18</b>	2.759	2.904	3.625	<b>28</b>	2.350	2.527	3.175
<b>9</b>	2.386	2.524	3.137	<b>19</b>	14.600	14.888	16.476	<b>29</b>	2.434	2.564	3.221
<b>10</b>	2.269	2.430	3.170	<b>20</b>	5.832	6.004	6.879	<b>30</b>	2.709	2.854	3.748
								<b>31</b>	2.752	2.978	3.795

/ (x 100)



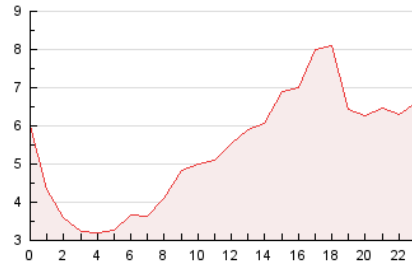
(x 100)



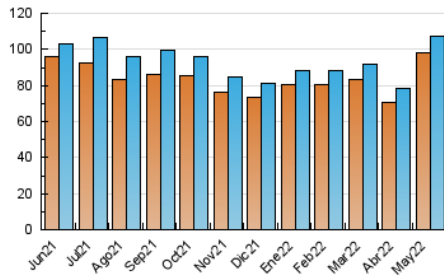
— (x 1000)



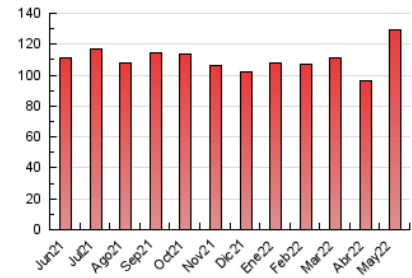
(x 1000)



/ (x 1000)



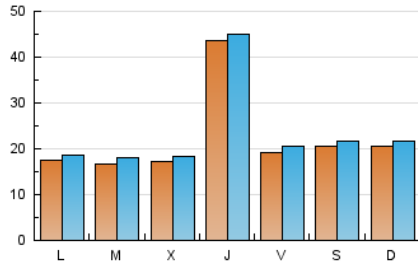
(x 1000)



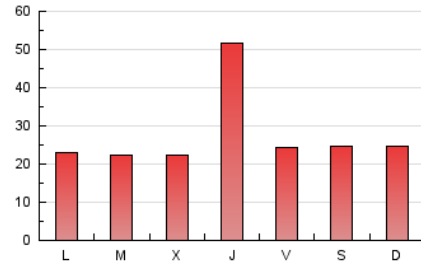
Mayo - 2022	65.717	71.479	84.275
	<b>2.183</b>	<b>2.306</b>	<b>2.719</b>
	2.230	2.364	2.821
	2.066	2.164	2.468
	1,18		
	0:00:43		
	0:03:58		

<b>1</b>	1.356	1.469	1.758	<b>11</b>	1.669	1.781	2.231	<b>21</b>	4.165	4.260	4.724
<b>2</b>	1.525	1.651	1.943	<b>12</b>	1.416	1.512	1.909	<b>22</b>	4.625	4.725	5.248
<b>3</b>	1.581	1.753	2.132	<b>13</b>	1.494	1.626	2.022	<b>23</b>	2.630	2.764	3.485
<b>4</b>	1.626	1.782	2.186	<b>14</b>	1.178	1.254	1.472	<b>24</b>	1.891	2.021	2.458
<b>5</b>	1.677	1.828	2.466	<b>15</b>	1.253	1.336	1.504	<b>25</b>	1.796	1.940	2.265
<b>6</b>	1.550	1.691	2.066	<b>16</b>	1.362	1.441	1.699	<b>26</b>	1.701	1.870	2.283
<b>7</b>	1.361	1.465	1.761	<b>17</b>	1.694	1.784	2.154	<b>27</b>	1.595	1.739	2.061
<b>8</b>	1.488	1.558	1.840	<b>18</b>	1.746	1.863	2.319	<b>28</b>	1.558	1.695	1.931
<b>9</b>	1.480	1.578	1.948	<b>19</b>	12.616	12.824	14.022	<b>29</b>	1.607	1.711	1.975
<b>10</b>	1.444	1.562	2.089	<b>20</b>	3.081	3.204	3.617	<b>30</b>	1.767	1.878	2.350
								<b>31</b>	1.729	1.914	2.357

/ (x 100)



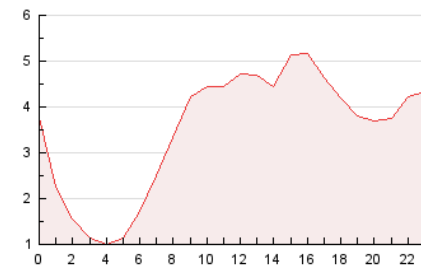
(x 100)



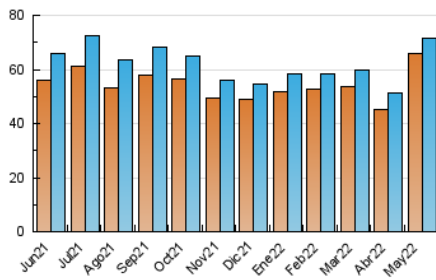
— (x 1000)



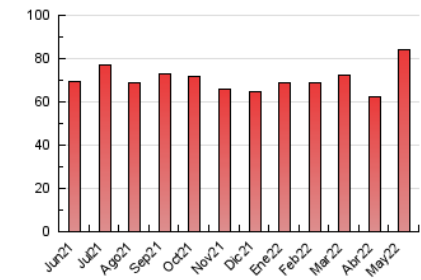
(x 1000)



/ (x 1000)



(x 1000)



Este Medio Electrónico de Comunicación ha sido medido por la herramienta Google Analytics de Google

**5**

**6**